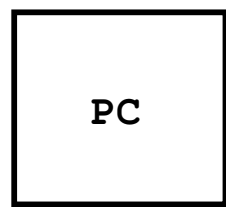


| | | | |
|------|---------------------------------------|----------|------------|
| v100 | Formal Relese | Gill Lee | 2024/4/16 |
| v110 | Added C48(10uF) on U1 Pin19 (DAC_REF) | Gill Lee | 2024/10/23 |



USB



ONOFF
WIO0

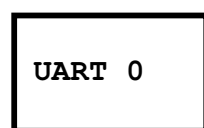


LRADC2
GPIO0

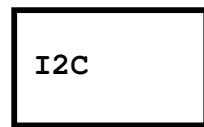


AI ON/OFF

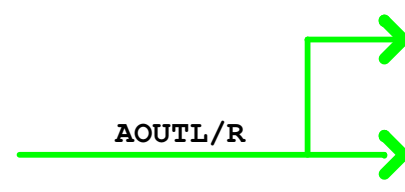
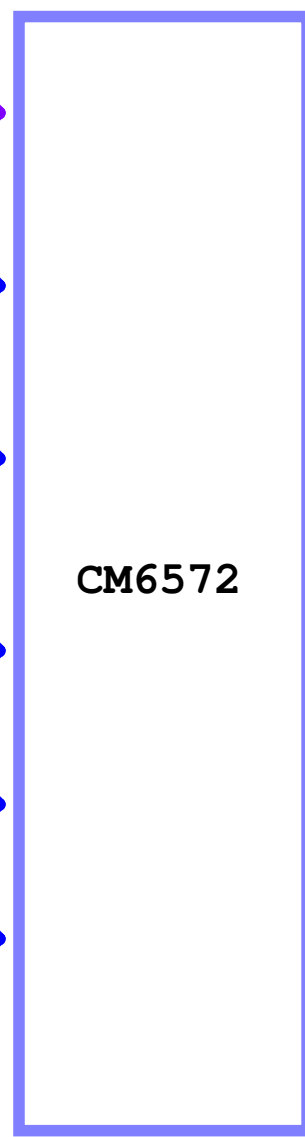
GPIO20



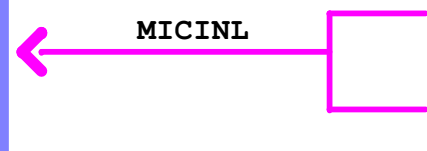
GPIO5/6



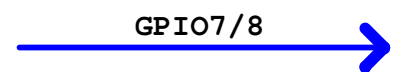
GPIO9/10



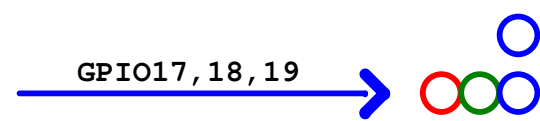
AOUTL/R



MICINL



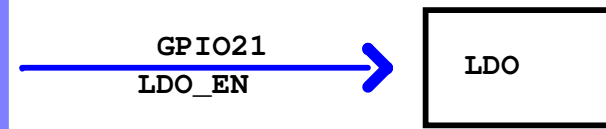
GPIO7/8



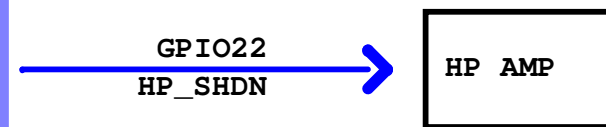
GPIO17,18,19

AI Blue LED

3 color LED

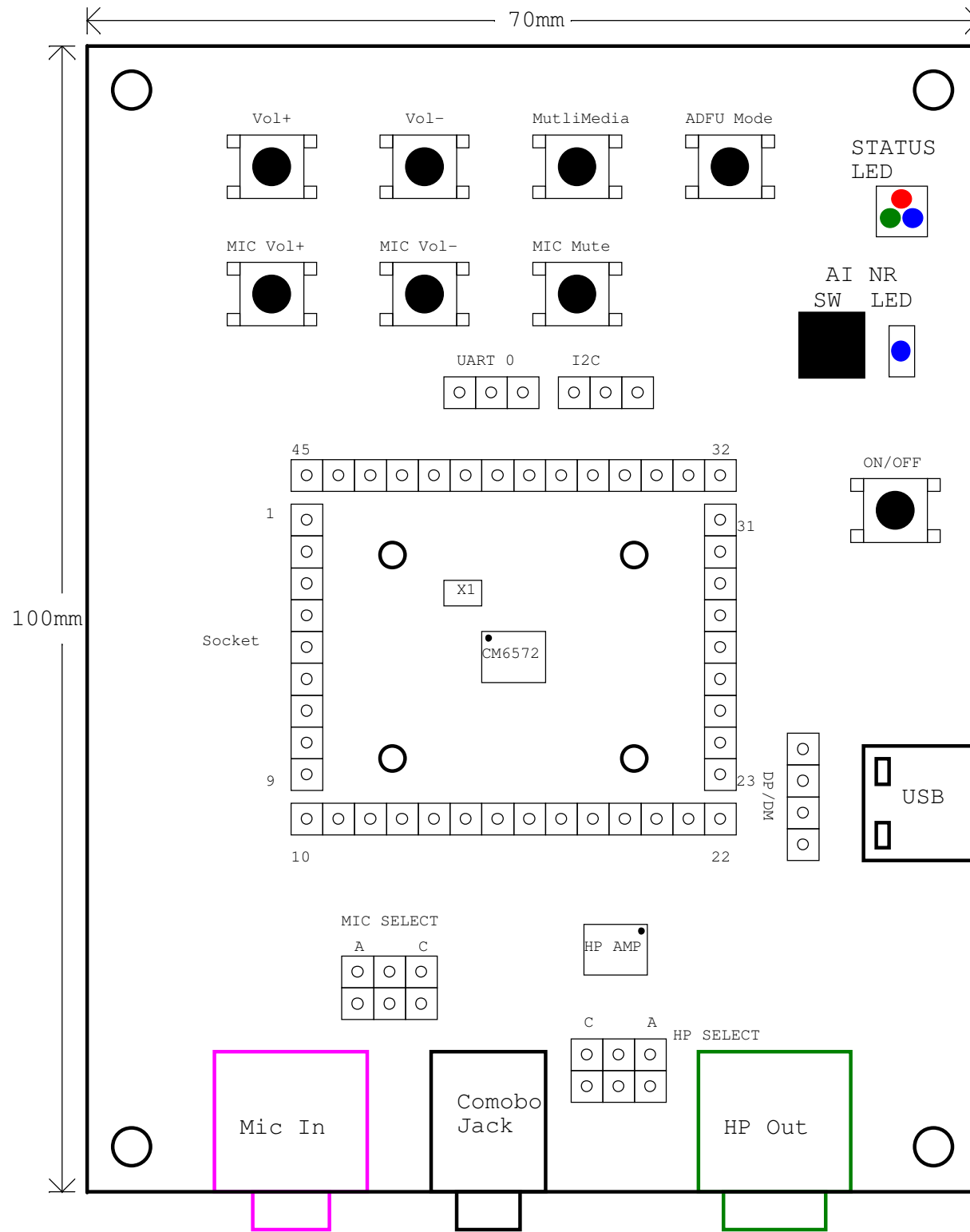


GPIO21
LDO_EN

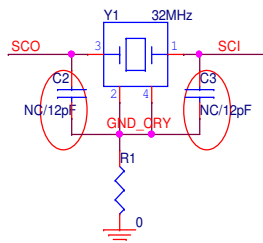


GPIO22
HP_SHDN

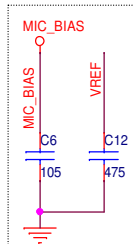
MODE
MIC VOL+/ MIC VOL-
MultiMedia
MIC Mute
HP VOL+/ HP VOL-



Crystal

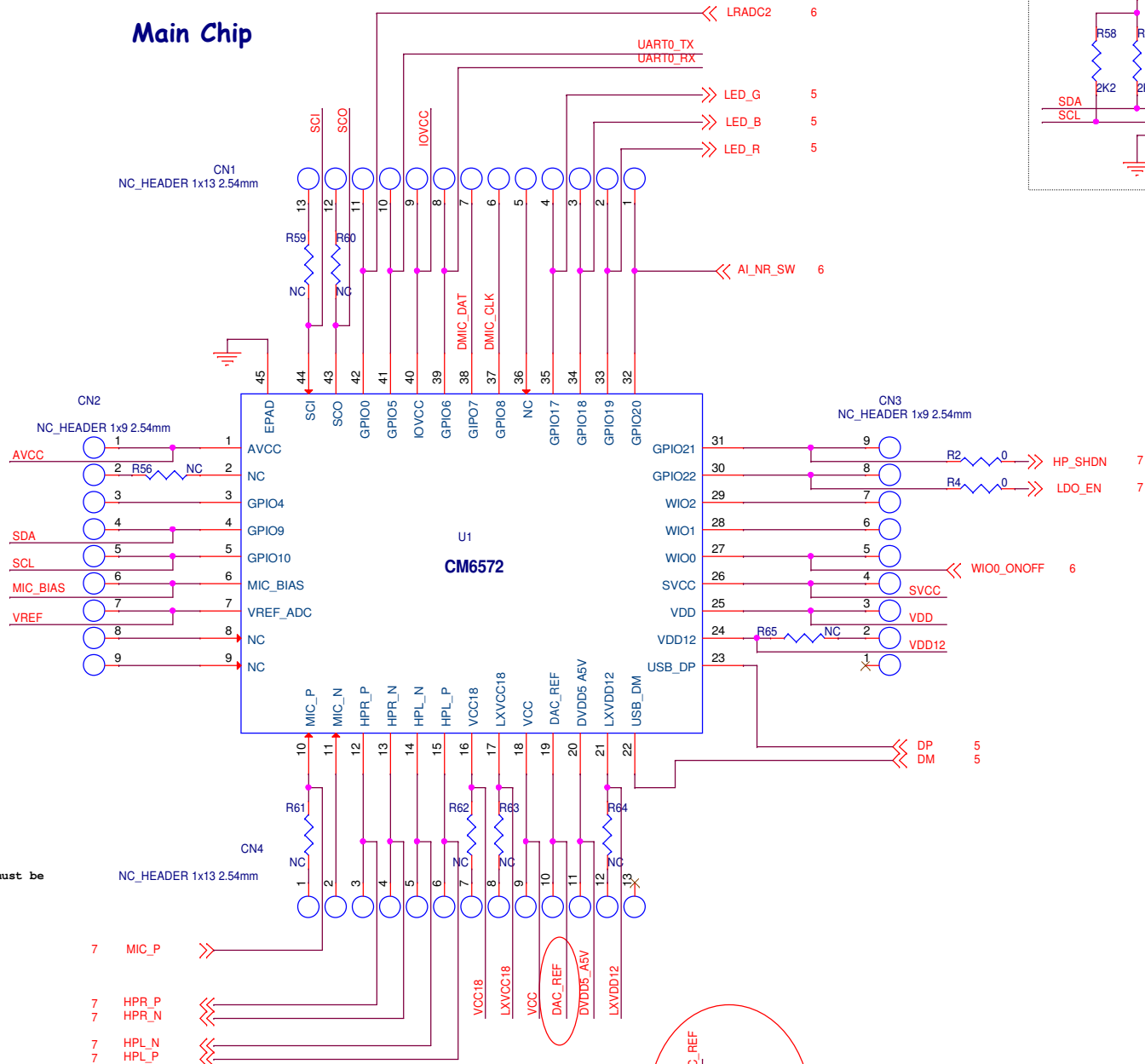


Freq:32MHz
Calibration Tolerance ±10ppm
CL=8pF
Temp. Tolerance :±10ppm
ESR<100ohm

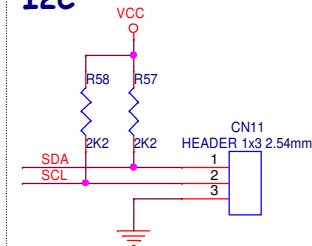


MIC_BIAS CAP GND must be near VREF CAP GND
Closed chip

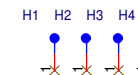
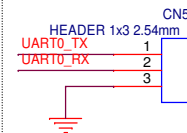
Main Chip



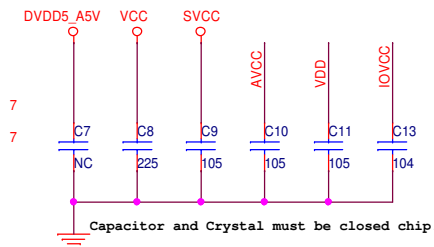
I2C



UART

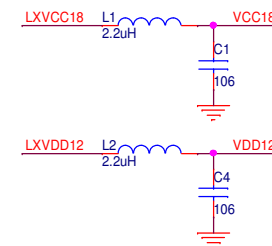


HOLE



Capacitor and Crystal must be closed chip.

Inductor



When use 3.3V I/O, connect to VCC



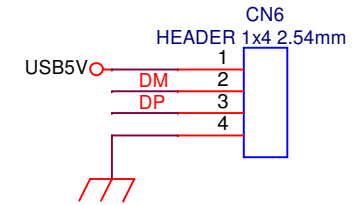
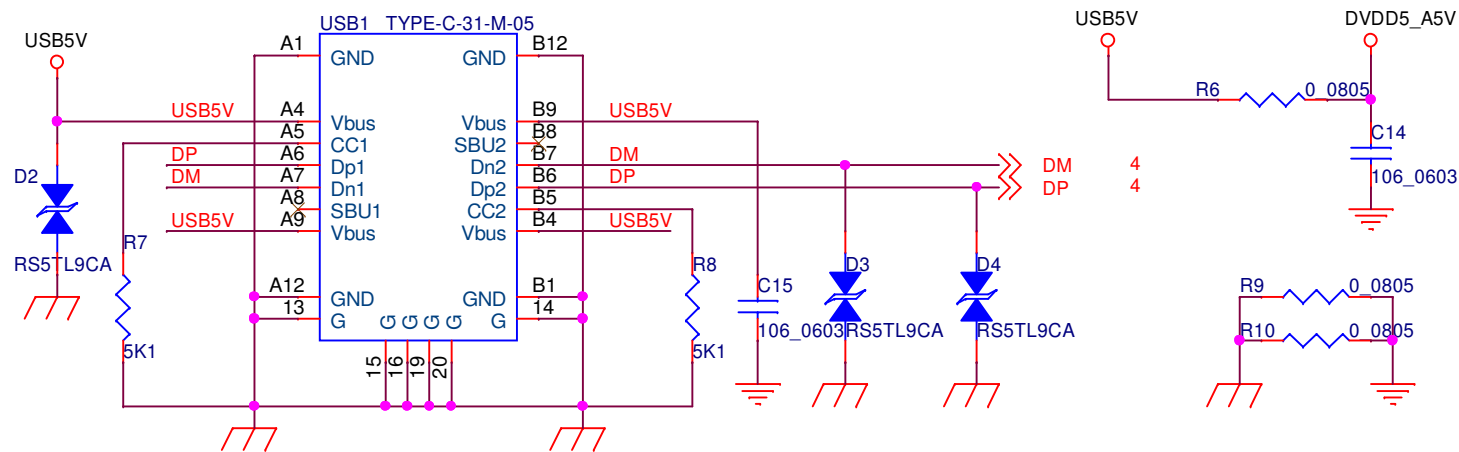
When use 1.8V I/O, connect to VC18



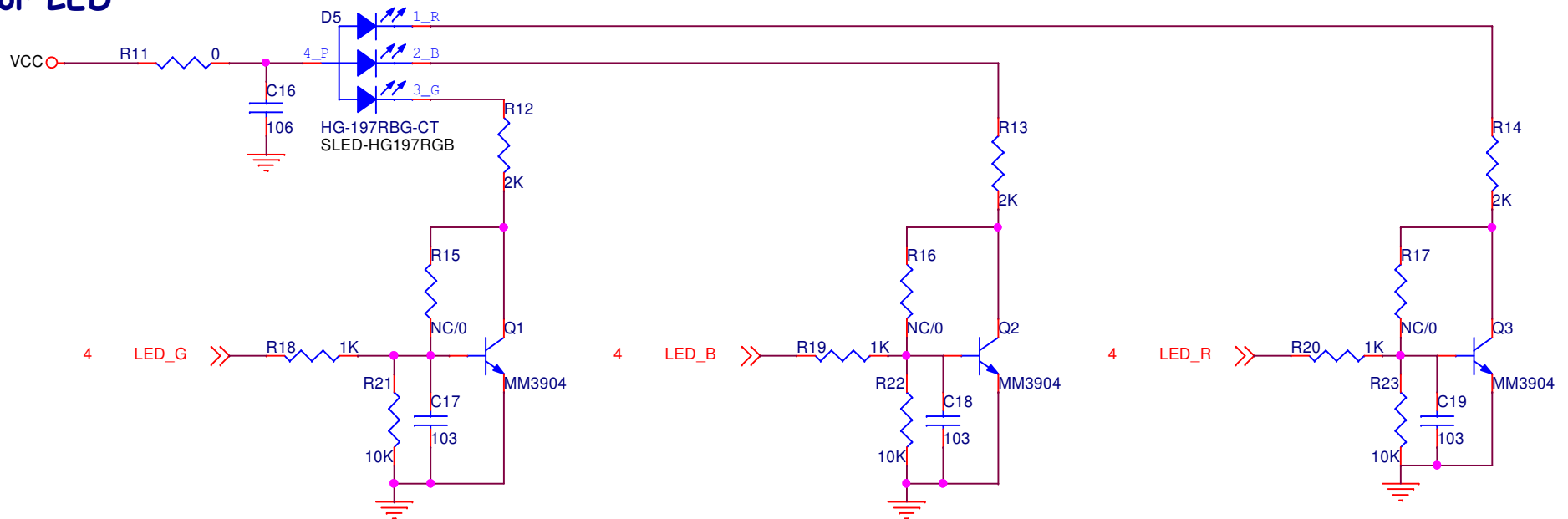
C-MEDIA ELECTRONICS Inc.
6F., 100, Sec. 4, Civil Boulevard, Taipei, Taiwan, R.O.C.

| | | | |
|-----------------------------------|-----------------|------------------|--------|
| Title | | CM6572_DemoBoard | |
| Size | Document Number | Rev 1.10 | |
| Date: Wednesday, October 23, 2024 | | Sheet | 4 of 7 |

Type C USB Connector



Tri-color LED



C-MEDIA ELECTRONICS Inc.
6F., 100, Sec. 4, Civil Boulevard, Taipei, Taiwan, R.O.C.

Title

CM6572_DemoBoard

Size Document Number

Power/LED

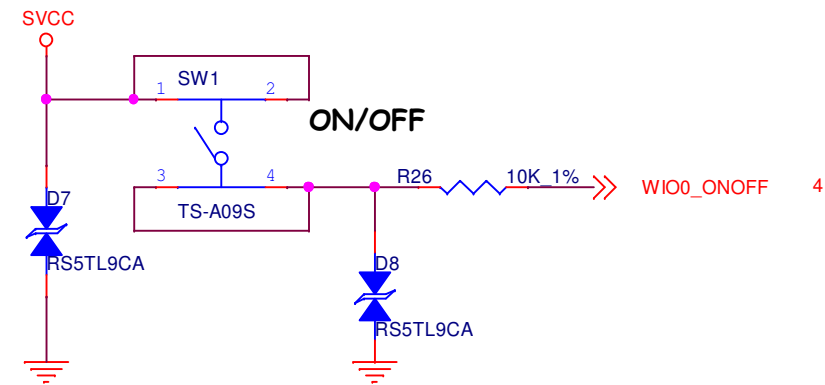
Rev

1.10

Date: Wednesday, October 23, 2024

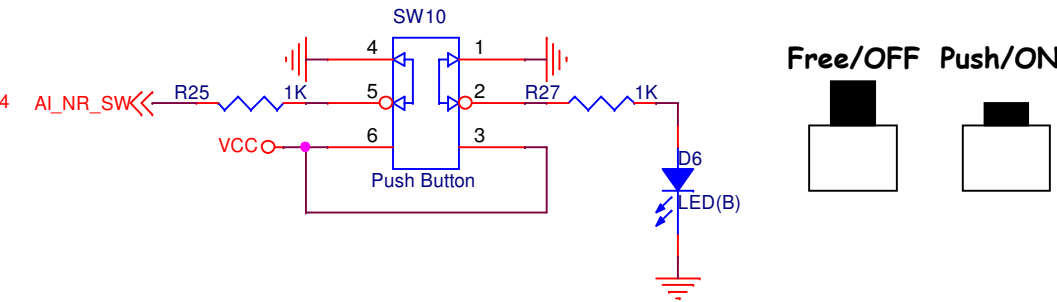
Sheet 5 of 7

ON/OFF Key

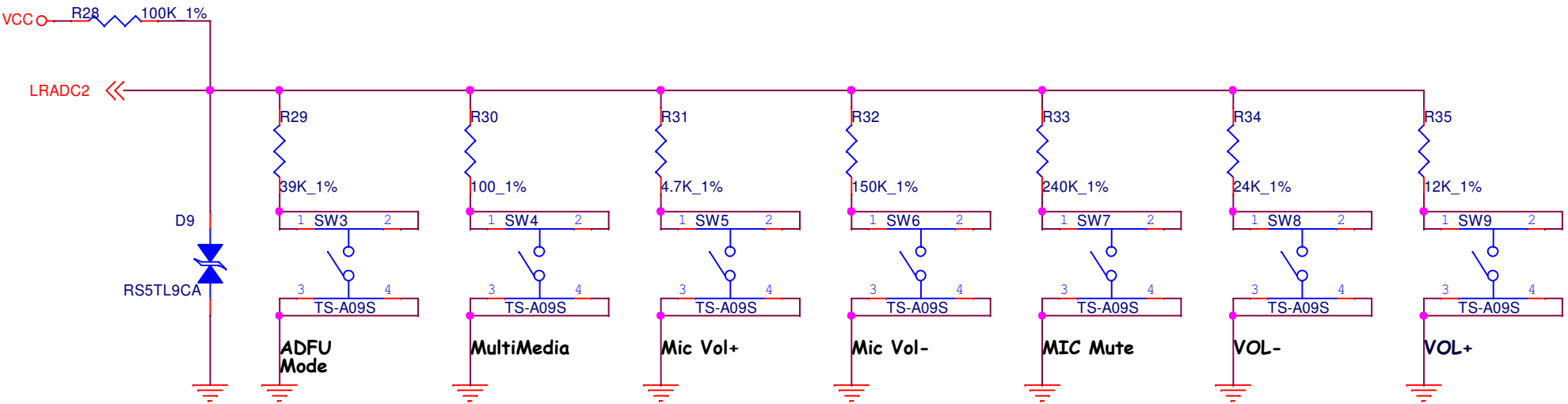


AI NR Key

OFF(Free): 1,2 / 4,5 short
ON (Push): 2,3 / 5,6 short



HID Button



Headphone Out

